



Midlands
Home
Inspections Inc.

Newsletter

Merry Christmas



December 2009

Christmas Tree Safety

As you deck the halls this holiday season, be fire smart. A small fire that spreads to a Christmas tree can grow large very quickly.

Picking the tree

- If you have an artificial tree, be sure it is labeled, certified, or identified by the manufacturer as fire retardant.
- Choose a tree with fresh, green needles that do not fall off when touched.

Placing the tree

- Before placing the tree in the stand, cut 1–2” from the base of the trunk.
- Make sure the tree is at least three feet away from any heat source, like fireplaces, radiators, candles, heat vents or lights.
- Make sure the tree is not blocking an exit.
- Add water to the tree stand. Be sure to add water daily.

Lighting the tree

- Use lights that have the label of an independent testing laboratory. Some lights are only for indoor or outdoor use, but not both.
- Replace any string of lights with worn or broken cords or loose bulb connections. Connect no more than three strands of mini string sets and a maximum of 50 bulbs for screw-in bulbs.
- Never use lit candles to decorate the tree.
- Always turn off Christmas tree lights before leaving home or going to bed.



Special points of interest:

- Christmas— December 25
- New Year’s Eve— December 31
- Join us on Facebook. —[Become a Fan](#)



Contact Us:

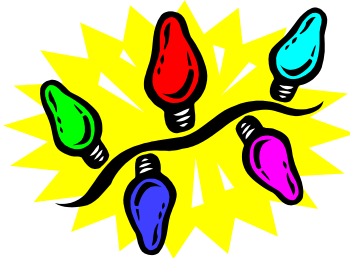
Phone:
402-630-6555

Email:
Info@MidlandsHI.com

On the Web:
www.MidlandsHI.com



**Wishing
Everyone a
Safe and Fun
Filled Holiday
Season. Merry
Christmas and
Happy New
Year from
Midlands
Home
Inspections.**



FACTS:

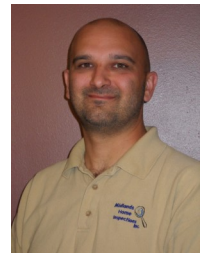
Each year, fire departments respond to an average of **210** structure fires caused by Christmas trees.

48% of home Christmas tree fires are caused by electrical problems.

A heat source too close to the tree causes **27%** of the fires.

After Christmas

Get rid of the tree when it begins dropping needles. Dried-out trees are a fire danger and should not be left in the home or garage, or placed outside against the home. Check with your local community to find a recycling program. Bring outdoor electrical lights inside after the holidays to prevent hazards and make them last longer.



**Brent Simmerman
President**